

# ARCHIVING PRACTICE

---

Terra Fluxus  
ARLIS/NA-VRA 3<sup>rd</sup> Joint Conference | Seattle  
March 9, 2016

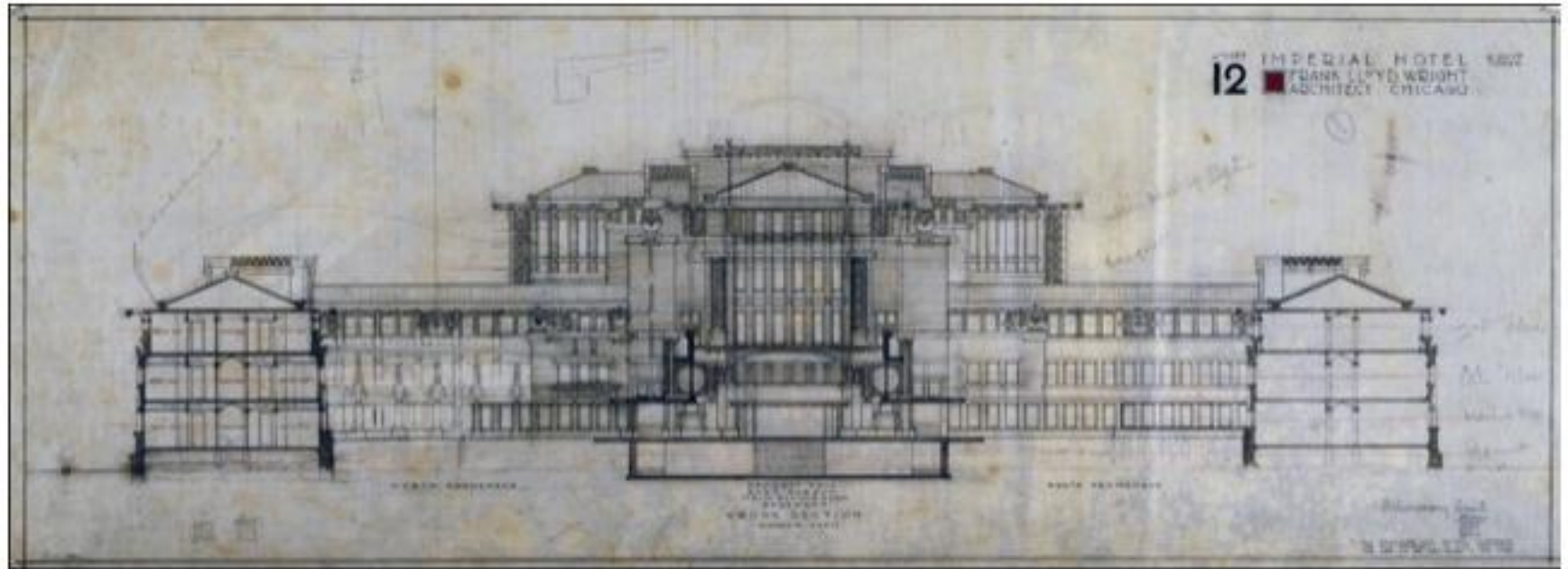
Carole Ann Fabian  
Director, Avery Architectural & Fine Arts Library  
Columbia University

# Paper-based archives

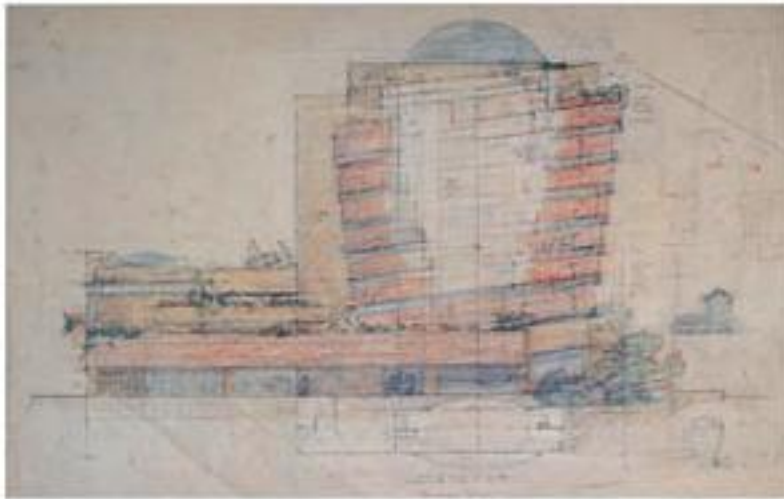
---

- Frank Lloyd Wright Foundation Archives
  - 1 million original items
    - drawings, correspondence, manuscripts, photography, time-based media, models
  - 40 thousand surrogate items to date
    - analog-to-digital content

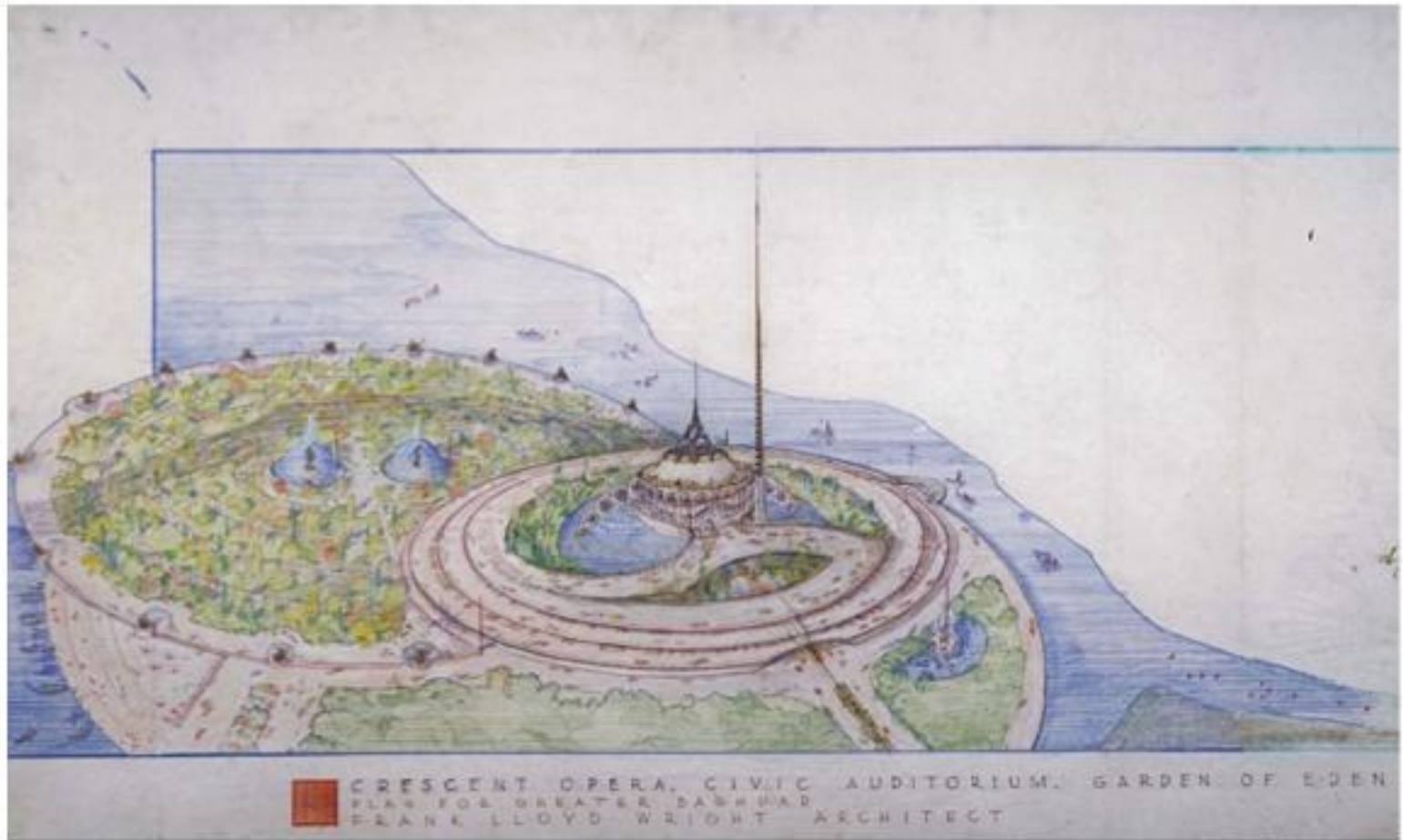




*Imperial Hotel, Tokyo c. 1922  
(demolished 1968)*



*Guggenheim Museum, New York, NY. 1943-56; 1959*

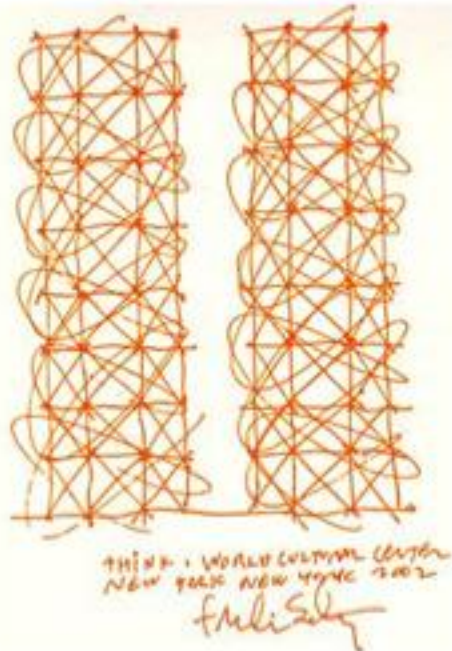


*Crescent Opera Civic Auditorium  
Garden of Eden, Plan for Greater Baghdad (Project)  
Baghdad, Iraq. 1957*

# Hybrid archives

---

- Frederic Schwartz Architects | THINK Team
  - Analog materials:
    - drawings, manuscripts, publications, correspondence, photography
  - Digital files:
    - drawings, manuscripts, publications, correspondence, photography





# Digital content: *creation & capture*

**BWR Built Works Registry**  
United States Architecture and the Built Environment

Home | Contribute | Contact

Search

Search results for "dunhuang": 1 of 11

- 1. Dunhuang Caves 260  
Archiving Status: Open  
CA 2009-2010
- 2. Dunhuang Caves 260  
Archiving Status: Open  
CA 2009-2010
- 3. Dunhuang Caves 267  
Archiving Status: Open  
CA 2009-2010
- 4. Dunhuang Caves 268  
Archiving Status: Open  
CA 2009-2010
- 5. Dunhuang Caves 269  
Archiving Status: Open  
CA 2009-2010
- 6. Dunhuang Caves 269  
Archiving Status: Open  
CA 2009-2010
- 7. Dunhuang Caves 269  
Archiving Status: Open  
CA 2009-2010
- 8. Dunhuang Caves 269  
Archiving Status: Open  
CA 2009-2010
- 9. Dunhuang Caves 269  
Archiving Status: Open  
CA 2009-2010
- 10. Dunhuang Caves 269  
Archiving Status: Open  
CA 2009-2010

**A** HOME | EXPLORE | LEARN MORE | CONTACT US

A web archiving service to harvest and preserve digital collections a service of the Internet Archive

Explore → Columbia University Libraries → Avery Library Historic Preservation and Urban Planning

## Avery Library Historic Preservation and Urban Planning

Collected by: Columbia University Libraries

Archived since: Jan, 2010

Description: A collection of website clones by subject specialists from the Avery Architectural and Fine Arts Library at Columbia University. The collection's principal focus is documenting the evolution of the built environment and public space through the intersection of historic preservation efforts and new development projects within urban planning forums, particularly in and around New York City.

Subject: Arts & Architecture, Government, Urban Architecture, Historic Preservation, Site Planning, Parks, Public Space

Created: Avery Architectural and Fine Arts Library, Columbia University Libraries

Collected: Avery Architectural and Fine Arts Library, Columbia University Libraries

You are viewing an archived web page, collected at the request of Columbia University Libraries using Archive-It. This page was captured part of the Avery Library Historic Preservation and Urban Planning collection. The information on this web page may be out of date. See [Metadata](#).

DONATE | SEARCH | MAIL UPDATES

# HIGH LINE

The official New site of the High Line and Friends of the High Line

ABOUT | NEWS & BLOG | EVENTS | GET INVOLVED | IMAGES & VIDEOS | DESIGN | SHOP

PARK INFORMATION

HIGH LINE SHOP

HIGH LINE MEMBERSHIP CAMPAIGN

RENEW | JOIN



# Four Frames

---



# Four frames conceptual model

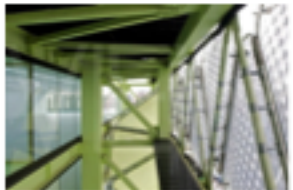
---



- Symbolic (temples): *meaning*



- HR (families): *relationships*



- Structural (factories): *technology*



- Political (jungles): *alliances*

# Symbolic:

---

## *value & meaning*

- What survives the current moment?
- What is the evidence of design practice?
- Should the merely **PERSISTENT** survive rather than an intentionally **PERMANENT** record?
- How does our capacity limit our commitment to permanence?



# HR:

---

## *collecting with intention*

- Historical framework
  - Maintaining continuity with the past
- What should be archived?
  - Selective but complete projects
  - Watershed moments
  - Intentional objects
  - Iterative files revealing process
- Role of the architect -- Role of the archivist
  - Informing *'the record'*

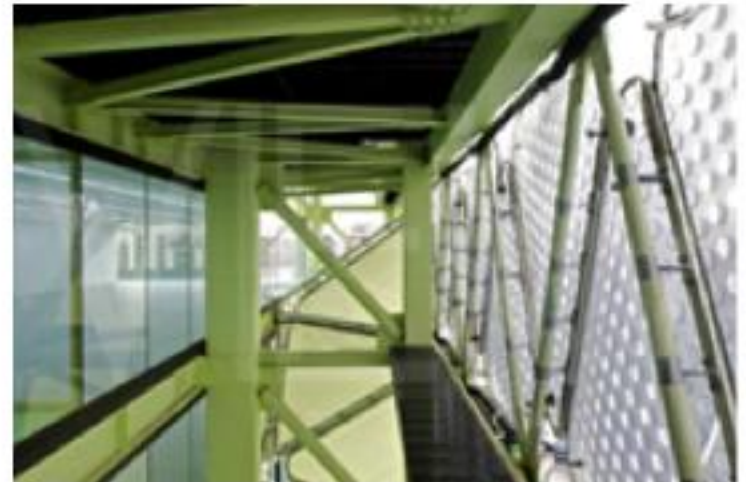


# Structural:

---

## *technological concerns*

- Technology
  - Non-standard technical platforms
  - Design imperative > *disrupt and innovate !*
- Scale & Scope
  - File size, file types
- Context
  - Native file systems
  - Archival arrangement as 'mind map'
  - Metadata constructs
- Duration
  - Capacity to store & retrieve



# Political:

---

## *communities of practice*

- Setting standards
- Rights & Risks
  - Cultural relevance today means sharing
  - If we see it can we use it?
- Access & Use:
  - Represent
  - Reference
  - Replicate
  - Revise (iterate)

